



**Shikara Constructions Pvt. Ltd.**

**Site Address:**

Shikara Pride Phase I,  
G.No. 55/0, Nere Pada,  
Panvel-Matheran Road,  
Nere, Panvel,  
Raigad, Pin - 410 206

**Corp. Address:**

204, 2nd Floor,  
Bezzola Commercial Complex,  
Opp. Suman Nagar,  
Sion-Trombay road,  
Chembur,  
Mumbai - 400 071

**Tel: 9322332939 • 8767630668 • 7499221017 • 8779790845 • 9082233549**

**sales@shikaraconstructions.com**

**www.shikaraconstructions.com**

**Maha RERA No.: P52000046692**

Available on MahaRERA website: <https://maharera.mahaonline.gov.in>

Disclaimer: The information in this brochure is indicative of the kind of development that is proposed. Subject to the approval of the authorities or in the interest of continuing improvements, the developer reserves the right to change the layout, plans, specifications, features, brands used or amenities without prior notice or obligation. The amenities shown inside the image in the brochure are purely indicative. All amenities, fixtures, brands, tiles, etc. mentioned in the brochure OR displayed in the show/sample flats are subject to availability and quality checks of the specific design at the time of execution and implementation.



# SHIKARA PRIDE

— REFRESH, REJUVENATE, REJOICE —



\*Artistic impression

A LUXURY CALLED NATURE,  
FOR A LIFE BEYOND  
IMAGINATION

## VISION

Shikara Constructions has a history of creating outstanding real estate landmarks and this line of business is dedicated to explore new avenues.

It endeavors to emerge as a preferred real estate business entity that operates within the boundaries of Ethics, compliance, quality and integrity.

As an Organization, we have always focused on team work as the major factor for creating wonders in whatever we do.

Our team is a fine collection of synergized, efficient and quality driven people with their own area of expertise.

Based on this, we have always met head-on with new challenges coming our ways. Optimism, energy and courage is what characterizes the group with a spectrum. We boast of thoughtful creation coupled with an unending drive for quality and assurance. We always see to it that our customers get a quality product from us, and hence our customers share pride to be associated with us.

At Shikara Constructions, there is a simple philosophy at work, customers are not our audience, but our success partners and in their satisfaction, lies our growth.

# SHIKARA PRIDE

REFRESH, REJUVENATE, REJOICE



\*Artistic impression

## MASTER LAYOUT PLAN



\*Artistic impression

# AMENITIES

Gazebo



Children's Play Area



Yoga Deck



Car Parking



# LIVE A PROUD LIFE



\*Artistic impression

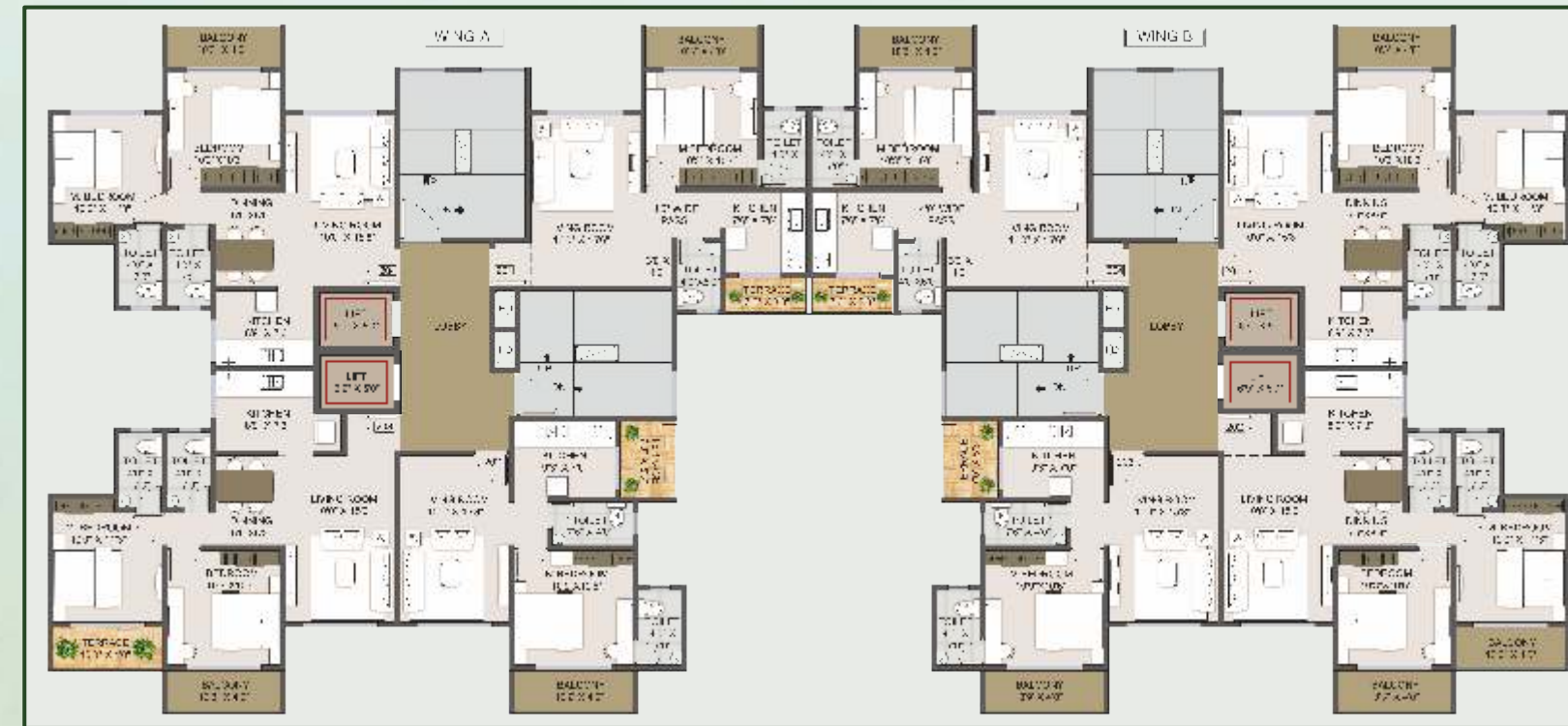
\*For reference purpose only

# FLOOR PLAN

1st Floor



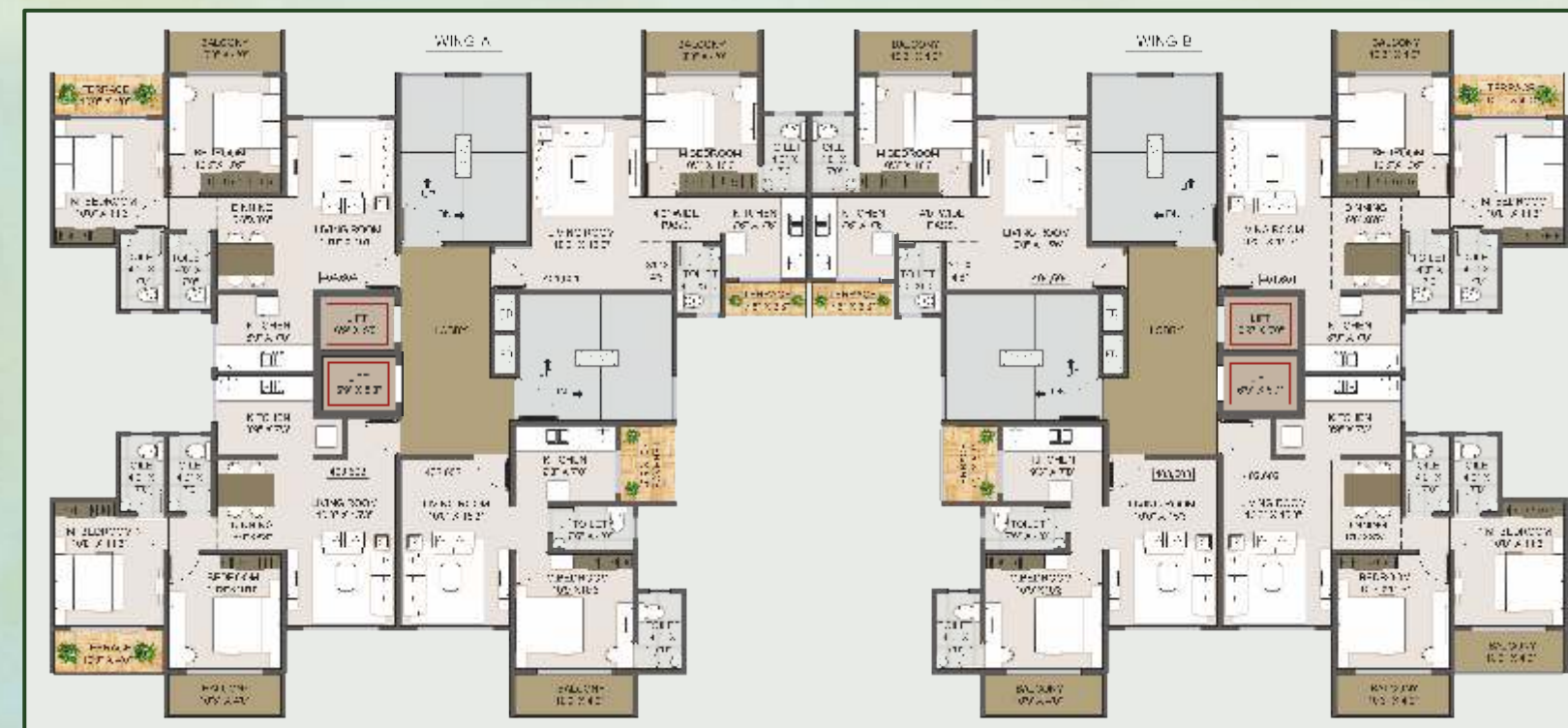
2nd Floor



3rd and 5th Floor



4th and 6th Floor



\*Artistic impression



Unit Plan 1 BHK



Unit Plan 2 BHK



\*Artistic impression

SHIKARA PRIDE

LOCATION PLAN

